

Commander Archiver



Automatic archiving and printing,

World-class robotics,

All in a simple, easy-to-use package



ARCHIVE MANAGEMENT



The DiscTag Enabled Workflow is designed around complete information automation. Products from many vendors, including DCA, allowing for the DiscTag XML metadata to populate the user interfaces of the applications, and, of course, each application adds its' specific report to the metadata.

Commander Archiver is the automated, DiscTag Enabled, robotic solution for ensuring that your plant retains every file necessary for remastering titles in the future.

Archiver is a complete standalone product that integrates with world-class robotic burners from Rimage. It includes a manual user interface and an automatic 'black-box' operating mode. Archiver also includes a complete label creation and editing application.

Archives can contain the DDP/CMF, image, HCRC, DiscTag metadata/job reports, as well as any other files or folders that exist with the title. The essential image files (DDP/CMF and image) and the support files (HCRC, DiscTag metadata, other files/folders) can either burn to the same or separate media.

All archives are processed with automatic HCRC verification, ensure that your archive matches the Gold Reference, each time, every time.

Creating Archives

Operators can schedule an archive creation job from a variety of methods:

- Automatic from Viper - utilizing the job control flexibility of the DiscTag Enabled Workflow, Viper can automatically send a job to Archiver after successful completion of a Load/Encryption or Verify job.
- Automatic from Commander Supervisor - within Supervisor, administrators can set AutoArchive rules that will monitor the DiscTag Workflow and your mastering server to ensure that archives are created for images that have completed all testing in your process. These rules can also create archives when your mastering server is becoming too full, based upon time or job completion criteria.
- Manual from Archiver Interface – the manual user interface allows for flexibility in choosing a specific image, media type and label, as well as being able to set specific options, such as including the support files on the same or separate media as the image files.

Device Setup

Commander Archiver will automatically scan its' system upon startup and setup any devices that are attached to the system, including optical drives and tape devices. Installation of a Rimage robot can be done at DCA prior to shipment or at your location during installation.

Archiver includes standard support for most physical media options, including:

- DLT tape
- CD-R/RW
- DVD-R/RW (including DL)
- DVD+R/RW (including DL)
- UDO-DMD
- BD-R/Re

Upon completion of the device setup, Archiver publishes its' device capabilities to the DiscTag metadata store. This prevents the Archiver system from receiving any jobs which its' devices and media are unable to process.

Label Creation

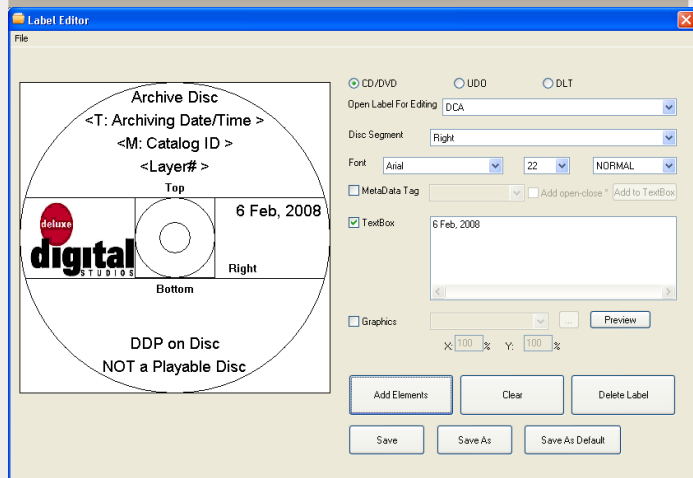
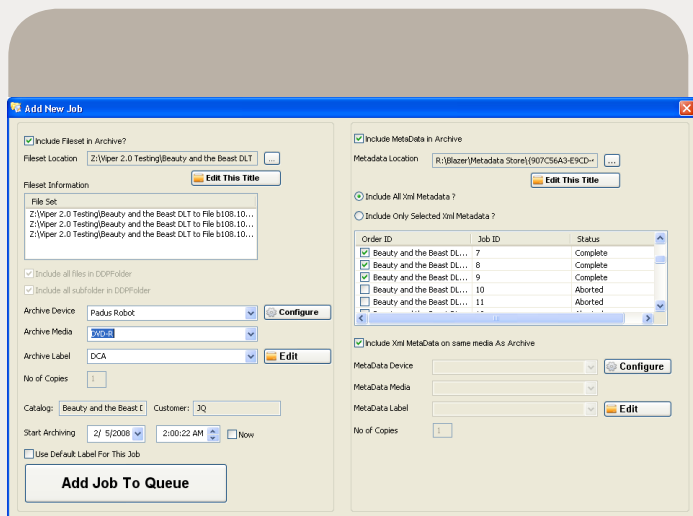
DCA has made label creation as simple as possible for Archiver users. You can choose from a multitude of available parameters, including:

- Date/Time
- Customer
- Catalog ID
- Folder name
- SKU
- or any other DiscTag metadata parameter

The label template editor allows you to specify whether label parameters will be printed with standard, TrueType fonts or in barcode fashion. You can also include any graphical elements on the label.

Reporting

A complete job log of all archive attempts is stored in the DiscTag metadata, including the full label image. This allows you to search and retrieve a title report, including the associated barcodes necessary to locate a title in your physical archive warehouse.



Simple, error-proof, automatic archives.

Commander Archiver is the only archiving solution designed specifically for the media manufacturing industry. Easy to setup and run with the included robotic support, Archiver can run in a completely automated environment. A robust archive creation process ensures that your archives will not only contain all possible files necessary for remastering the title, but also match the gold reference HCRC.

Also Available for Plant Management:

Commander Scheduler- provides complete automation for image transfer, mastering, verification and archival jobs from one interface.

Scheduler can provide automatic scheduling, which uses load-balancing and user-defined rules to automatically assign incoming images to systems based on the current production load, compatibility of the image type and priority of the job. Scheduler can also receive jobs automatically from ERP systems, such as SAP & J.D. Edwards, providing a seamless handoff from the front-end of the plant to the manufacturing operations

Commander Trends- automatically assimilates DiscTag metadata to provide daily reports on the health of your plant. These reports can be sorted by LBR, replication line or format type and are customizable using parameters from any tester, mastering or replication line available in the metadata.

Commander Supervisor- unlocks the potential of the DiscTag metadata by providing a tool that can search and retrieve job history reports, import and export metadata between locations, setup rule-based automatic archives and allow plant managers to set expiration dates for old versions of titles.



Contact Us

For more information on Commander Supervisor contact your DCA Account Manager

Americas & Asia

Eric Carson, Product Mgr
eric@dcainc.com
T:918.225.0346 x1054
F:918.225.1113
www.dcainc.com

Europe & India

Chris Vangramberen
chrisv@dcainc.com
T:+49.6021.45900.0
F:+49.6021.45900.29

Japan

Nozomu Hayatsu
nozomu@dcainc.com
T:+81.3.3402.5631
F:+81.3.3402.5615