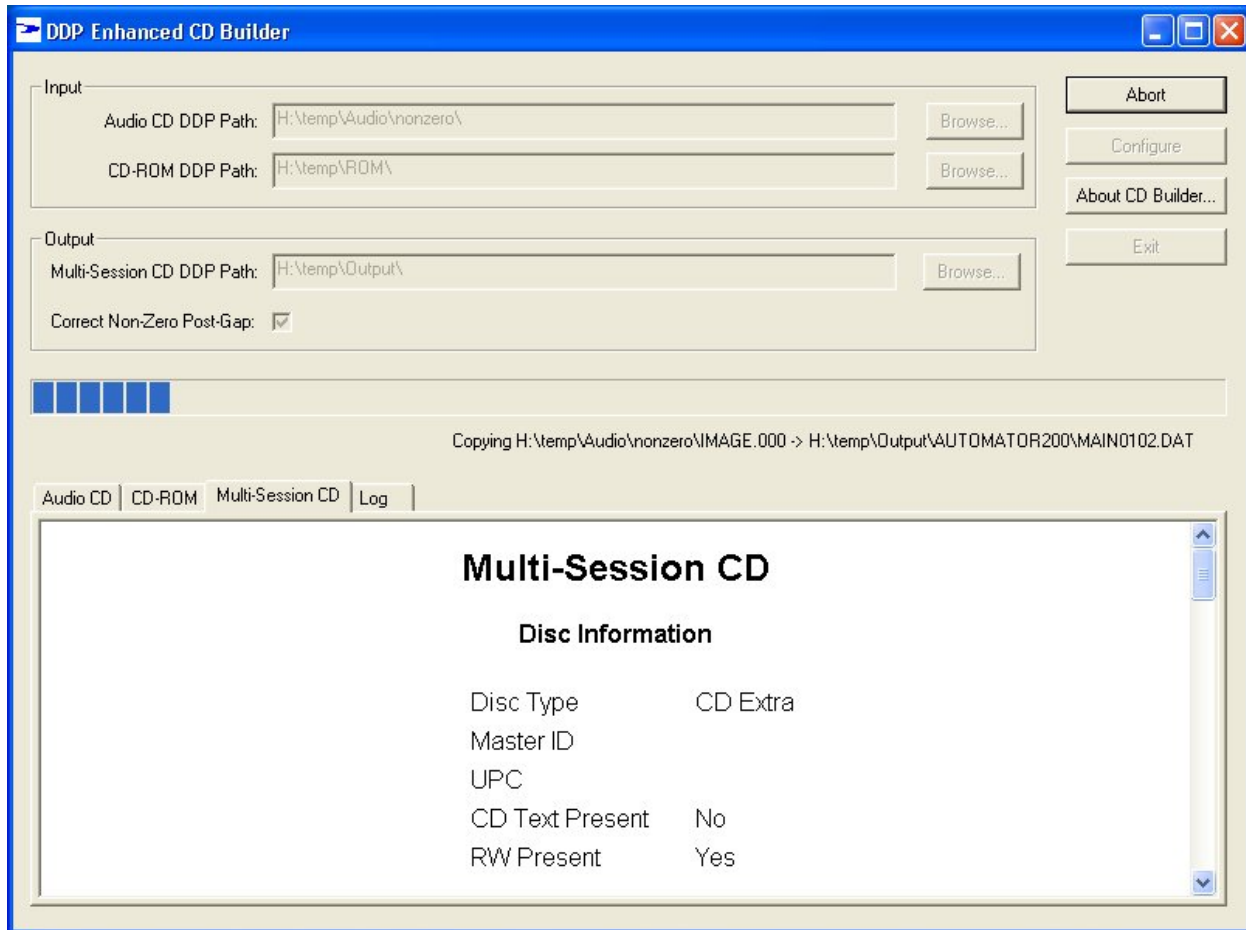


## DCA DDP Enhanced CD Builder

DCA's DDP Enhanced CD Builder joins a CD-Audio session and a CD-ROM session together into a single multi-session, enhanced CD. It merges the DDP<sup>®</sup> and lead-in information and adjusts the file system in order to ensure that the enhanced CD is playable in both audio and ROM drives. It has an easy to use, intuitive interface which requires minimal user training. The resulting multi-session DDP file set can be copied from the hard drive onto a CD-R for archiving, or sent electronically via DCA's OptiSend to a mastering facility.

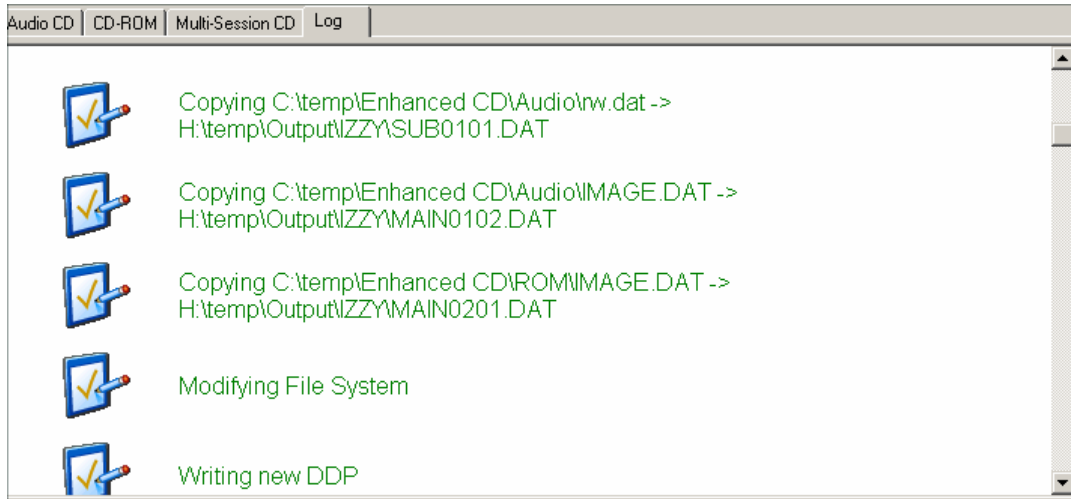


Currently, creating a valid multi-session Enhanced CD is a tedious and laborious process. For example, starting with one CD Audio disc and one CD-ROM disc, the operator loads the CD Audio disc into an authoring tool while maintaining track/index change points, ISRC values, CD TEXT, and RW sub channel information. He then writes and closes the session to a CD-R while leaving the disc appendable. He then must create a new session and drag the files from the CD-ROM disc to the new session. Finally, he closes the session on the CD-R. This example does not even include the process of dealing with Apple Macintosh HFS files!

The DDP Enhanced CD Builder changes that entire process into one of selecting the Audio DDP file set, selecting the ROM DDP file set, and selecting **Start**.

## DDP Enhanced CD Builder Output

On completion, a HTML report is generated with all the job information and DDP information. This report can be emailed or attached to the content as it is then sent to the facility.



The output is a standard multi-session DDP fileset.

Name	Size	Type	Modified
DDPID	1 KB	File	8/18/2003 3:56 PM
DDPMS	1 KB	File	8/18/2003 3:56 PM
MAIN0102.DAT	363,366 KB	DAT File	8/18/2003 3:56 PM
MAIN0201.DAT	61,596 KB	DAT File	8/18/2003 3:56 PM
pq_descr	2 KB	File	8/18/2003 3:56 PM
SUB0101.DAT	14,840 KB	DAT File	8/18/2003 3:55 PM

## Configuration

Configuration of DDP Enhanced CD Builder is simple. It has an easy to use, intuitive interface, and operates on Windows 2000, Windows XP and Windows NT.

## For more information on DCA's DDP Enhanced CD Builder, contact your DCA Regional Sales Manager

### *Americas*

Fred Perez  
fredp@dcainc.com  
Telephone:  
925-426-9948  
Fax:  
240-248-1105

### *Europe*

Chris Vangramberen  
chrisv@dcainc.com  
Telephone:  
+49-6021-45900-0  
Fax:  
+49-6021-45900-29

### *Japan*

Nozomu Hayatsu  
nozomu@dcainc.com  
Telephone:  
+81-3-3402-5631  
Fax:  
+81-3-3402-5615